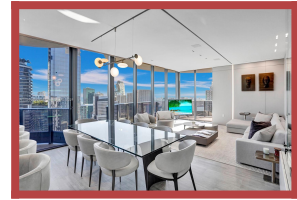


Condominium
BRICKELL FLATIRON CONDO PH5208
#MLS: A11544055
\$ 20 000



Angebotsdatum	2024/03/07
Stadt	Miami, FL 33131
Anschrift	1000 Brickell Plz, #PH5208
Wohnfläche	178 m ²
Steuer/Jahr	- ? -
Baujahr	2019
Schlafzimmer	3
Badezimmer	3 / 1

Welcome to this corner penthouse residence, boasting breathtaking views of the city skyline and the bay. Live in the center of it all. Rented FULLY FURNISHED/TURNKEY with high-end Artefacto furniture. A surround sound system is installed throughout the units ceilings. Flushed ceiling lights, custom cabinetry, custom wallpaper placed throughout, a wine rack, electric blinds, smart home devices, and more additions! Two express elevators are available on the PH floors. 3 Parking spots (2 assigned + 1 valet) with an EV charger placed in one of the assigned spots. 64th-Floor Rooftop Pool w/ Towel Service, rooftop restaurant, steam room, sauna, gym, lap Pool, childrens Pool, theater, billiards Room. Video available. Easy to show.

www.immobilienmiamiflorida.de
CALL: +1 786-468-4380